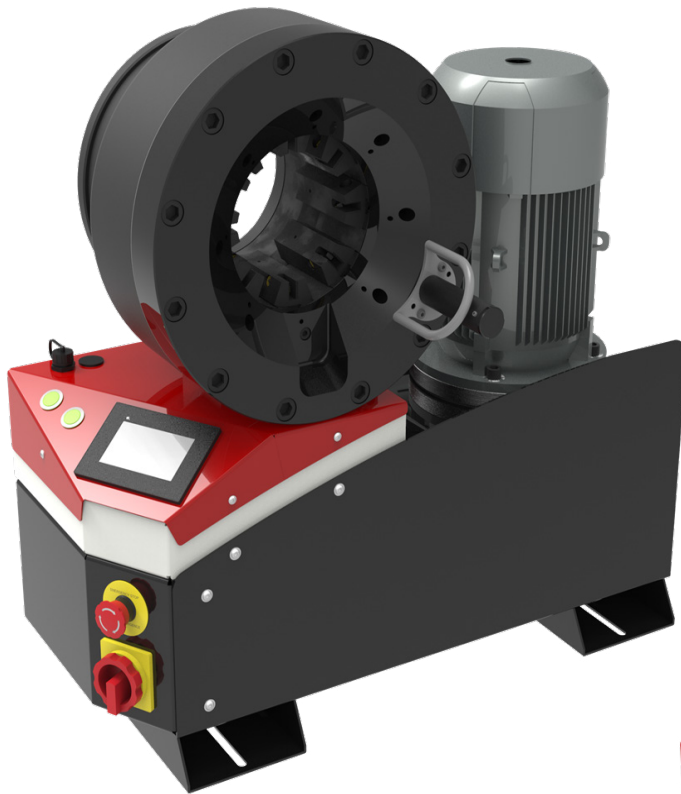


# MB 350 EVO / MB 350 EVO L

FULL SERVICE WORKSHOP  
BENCHTOP; VERY HIGH CRIMP FORCE

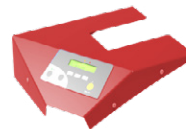


## KEY FEATURES

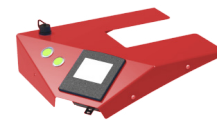
- Crimp force of up to 350 tonnes for hoses up to 3"
- Easy to use and robust
- Automatic maintenance alerts
- Groove for 90° long drop fittings
- Also available as S CRIMP 350 L with 4.0 kW motor
- Numerical micrometer
- Model shown equipped with SCS control panel
- Calliper option on SCE control panel
- Bluetooth as standard on SC and SCE control panels



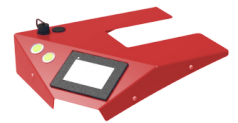
## CONTROL OPTIONS AVAILABLE ON REQUEST



SC



SCE



SCS

## TECHNICAL SPECIFICATIONS

<b>CRIMP RANGE</b>	<b>NOISE LEVEL</b>
4 - 130 mm (0.157 - 5.118")	<70 dB A
<b>CRIMP FORCE</b>	<b>MOTOR</b>
350 t	5.5 kW / 4 kW
<b>OPENING WITH DIES</b>	<b>VOLTAGES</b>
+54 mm (+2.125")	220/240 V, 3Ph, 50 Hz
<b>COMPLETE OPENING</b>	380/415 V, 3Ph, 50 Hz
180 mm (7.086")	208/240 V, 3Ph, 60 Hz
<b>MASTER DIE LENGTH</b>	380/415 V, 3Ph, 60 Hz
115 mm (4.523")	<b>DIMENSIONS</b>
<b>STANDARD DIES</b>	765 x 400 x 750 mm
15, 18, 21, 24, 27, 30, 33, 36, 39, 42, 45, 48, 51, 57, 62, 66, 70, 73, 76	(30 x 16 x 30")
	<b>NET WEIGHT</b>
	262 kg (578 lb)
	<b>TECHNICAL FEATURES</b>
	-Automatic maintenance alerts -Cylinder protection against dust - durable design -Also available as S CRIMP 350 EVO L with 4.0 kW Motor

## OPTIONAL



Maintenance Kit



Marking Dies



Die Storage Panel



Die Storage Table



Electrical Footswitch



Quick Change Gun



Aluminium Quick Change Gun



Mechanical Backstop



Die Sets for Brake & Air Conditioning Hoses



Die Storage Panel EVO

**MB 350 EVO / MB 350 EVO L**
**FULL SERVICE WORKSHOP  
BENCHTOP; VERY HIGH CRIMP FORCE**
**HOSE AND FITTINGS SELECTION**

HOSE TYPE	FITTING TYPE	MAX HOSE SIZE
2 WIRE BRAID & TEXTILE	MF2000 MULTIFIT; MF3000 OPF; MF3000 OPK	3"
3 WIRE (1 BRAID + 2 SPIRAL)	MF2000 MULTIFIT; MF2000 INTERLOCK PLUS; MF2000 SPIRALFIT;	1 ¼"
4 WIRE SPIRALS	MF2000 MULTIFIT; MF2000 INTERLOCK PLUS; MF2000 SPIRALFIT; MF3000 OPK	2"
5 WIRE (4 SPIRAL + 1 BRAID)	MF2000 INTERLOCK PLUS	1 ¼"
7 WIRE (6 SPIRAL + 1 BRAID)	MF2000 INTERLOCK SUPER	1 ½"
6 WIRE SPIRALS (350 BAR / 5000psi)	MF2000 INTERLOCK PLUS; MF2000 SPIRALFIT	2"
6 WIRE SPIRAL (420 BAR / 5000psi)	MF2000 INTERLOCK PLUS; MF2000 INTERLOCK SUPER	1 ½"
8 WIRE SPIRALS	MF2000 INTERLOCK PLUS	1 ¼"